

GREEN GLUE

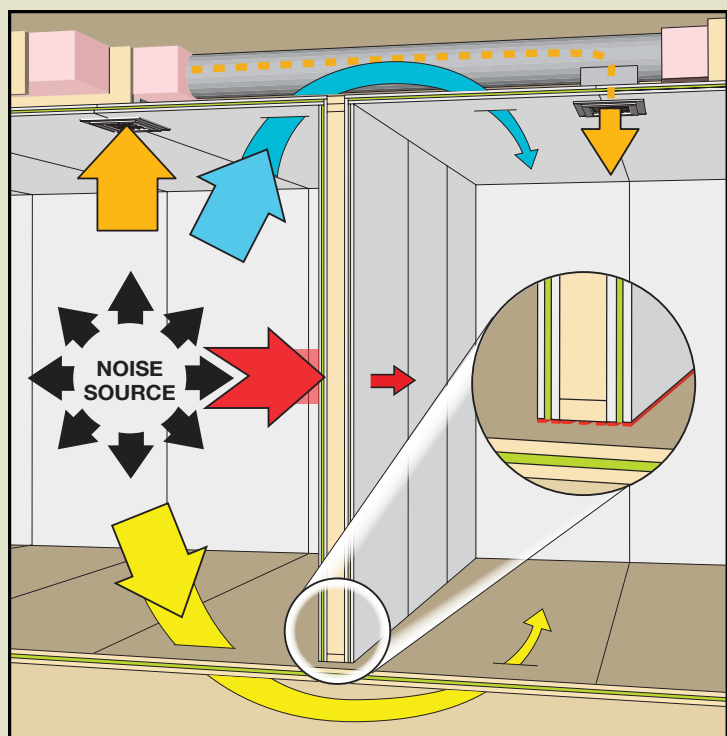
DAMPING COMPOUND

SOUNDPROOFING FOR WALLS, CEILINGS & FLOORS

SUPERIOR SOUNDPROOFING AT LOW FREQUENCIES

CAN BE USED OVER EXISTING WALLS AND CEILINGS

FAST EASY APPLICATION WITH LESS WASTE



■ Green Glue ■ SilenSeal Acoustical Caulk

Sound can reach the next room through several different pathways. Using Green Glue on walls, floors and ceilings greatly reduces this flanking noise. The damping provided by Green Glue will overcome almost every potential problem.

Green Glue is your soundproofing solution for walls, ceilings and floors

Simple and Fast Application

- ▶ No measuring or troweling
- ▶ Use between two sheets of standard drywall or plywood
- ▶ The ONLY product actually designed for use over existing walls and ceilings.
- ▶ Used 1000's of times for high performance walls, ceilings and floors.
- ▶ Reliable performance; Green Glue virtually eliminates any short circuits

Green Glue Notably Outperforms

- ▶ Quiet Sheetrock
- ▶ Soundboard
- ▶ Resilient Channel
- ▶ Double Drywall and Insulation

Solve your noise problem. Call now to get it right the first time 888-666-5090

With Sound Isolation Company you will get the help you need: expert design, product selection and installation instruction. We have the experience you need for a partnership that will work.

* Please don't use GG in direct contact with solid finished wood products

SOUND [ISOLATION] COMPANY

2900 WESTINGHOUSE BLVD. SUITE 106

CHARLOTTE, NC 28273

704 / 504 / 1127 PH

704 / 504 / 1115 FX

888 / 666 / 5090 TOLL FREE

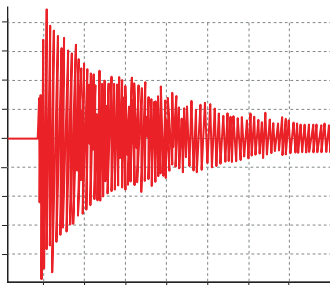
WWW.SOUNDISOLATIONCOMPANY.COM

www.soundisolationcompany.com

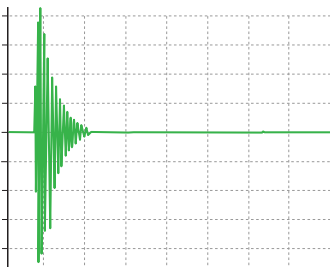


Green Glue provides higher performance with reliable results

- **Easy Application:** One tube of Green Glue will dispense in 15 seconds using a standard quart size caulking gun.
- **Fast Installation:** Apply Green Glue in a random pattern; it is not necessary to have complete coverage to obtain excellent results.
- **Cost Savings:** No more wasting or piecing together expensive specialty soundproofing materials. Cut your drywall to the size you need and apply Green Glue.



Raw Drywall Assembly



Green Glue Assembly

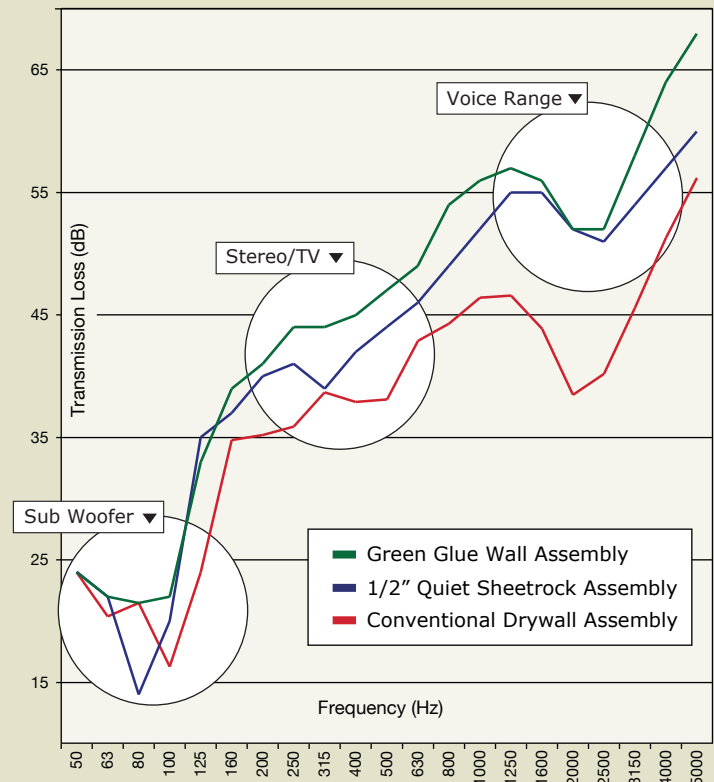
Less Vibration, Less Noise

As airborne sound waves hit a wall, ceiling or floor, the energy it carries is actually vibration. This vibration energy travels through the assembly and into adjoining rooms where you hear it as sound. Green Glue works by converting the vibration energy traveling through the assembly into heat energy, this uses up the energy quickly. The greater the decrease in vibrational energy, the less sound you will be able to hear in the surrounding rooms.

The adjacent charts clearly demonstrate the faster rate of vibration decay when Green Glue is used, compared to a wall when it is not used. By installing Green Glue in your wall, floor or ceiling, you will be able to create superior sound isolated, and quieter, rooms.

How quiet is your wall?

Below shows how much sound a wall will block or dissipate.



Sometimes you actually DON'T get what you paid for. See below cost analysis.

Material	Source Side, Framing, Receiving Side	STC	Cost
Green Glue	5/8" Drywall + 2 tubes GG + 5/8" Drywall, 2x4 wood studs 24" OC + R13 Fiberglass 5/8" Drywall	52	\$1.99 sqft
1/2" Quiet Sheetrock	1/2" Quiet Sheetrock, 2x4 wood studs 24" OC + R13 Fiberglass 5/8" Drywall	49	\$2.85 sqft
Soundboard	5/8" Drywall + 1/2" Soundboard, 2x4 wood studs 24" OC + R13 Fiberglass 1/2" Soundboard + 5/8" Drywall	46	\$2.10 sqft
Resilient Channel	5/8" Drywall + RC-1 Resilient Channel, 2x4 wood studs 24" OC + 3" Mineral Fiber 5/8" Drywall	43	\$2.00 sqft
Conventional	5/8" Drywall + 5/8" Drywall, 2x4 wood studs 24" OC + R13 Fiberglass 5/8" Drywall	42	\$1.05 sqft

Suggested Coverage

Good: 2 tubes per 32 sqft sheet = 192 sqft per case

Great: 3 tubes per 32 sqft sheet = 128 sqft per case

SOUNDPROOFING ACCESSORIES

Sealtight Putty Pads

SilenSeal Acoustical Caulk

GREEN GLUE

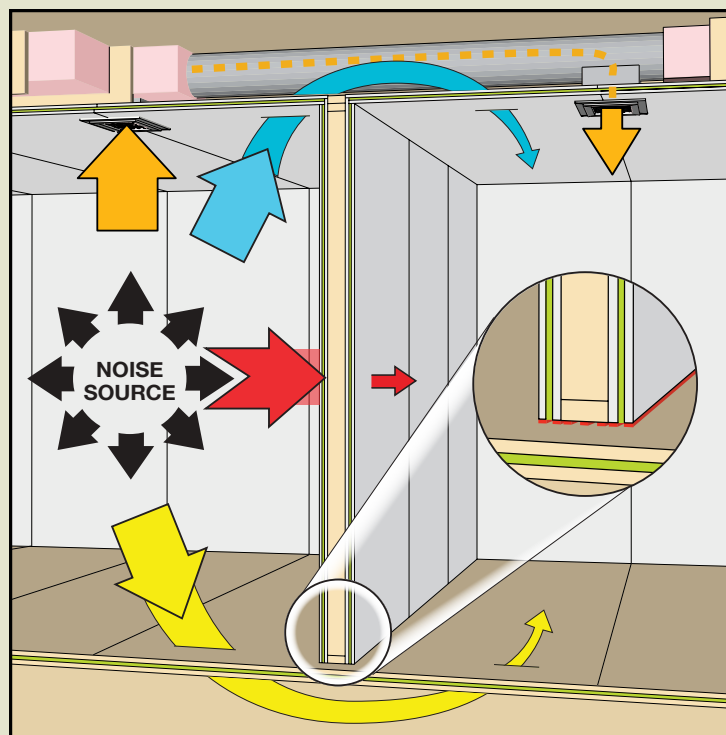
5 GALLON PAILS

SOUNDPROOFING FOR WALLS, CEILINGS & FLOORS

ONE SOUNDPROOFING PRODUCT FOR ALL APPLICATIONS

EASY PAIL INSTALLATION FOR LARGER PROJECTS

THE ONLY PRODUCT MADE FOR EXISTING
WALLS, FLOORS, AND CEILINGS



Green Glue SilenSeal Acoustical Caulk

Sound can reach the next room through several different pathways. Using Green Glue on walls, floors and ceilings greatly reduces this flanking noise. The damping provided by Green Glue will overcome almost every potential problem.



Green Glue Pails. Soundproofing Solution for Your Walls, Ceilings and Floors.

Green Glue in pails is perfect for larger jobs; less trash, cost savings, and easy installation with fewer men.

Using Green Glue in 5 gallon pails can be a big benefit for larger projects. Each pail covers 11 sheets (352 sqft) of 4x8 drywall or plywood. The cost of Green Glue in pails is lower than in tubes, saving money on your project. With our simple to use installation gun and follower plate, you can cut waste, save time, provide a simple soundproofing solution, and leave with a happy customer.

The damping properties of Green Glue have been shown to eliminate flanking paths, resulting in a better result than alternative methods. Green Glue is the only soundproofing product that is actually designed to work over existing walls, floors and ceilings; before selecting another product ask for testing that shows results with doubly layers of sub floor or drywall. Green Glue has been tested in more walls than any other product.

Green Glue is the right choice for your soundproofing project.

- Works with off the shelf drywall or plywood available anywhere.
- Requires no special tools, doesn't complicate your project. Your trades already know how to hang drywall and install plywood.
- Ready to ship or be picked up today from 11 locations across the US.

Solve your noise problem. Call now to get it right the first time 888-666-5090

With Sound Isolation Company you will get the help you need: expert design, product selection and installation instruction. We have the experience you need for a partnership that will work.

SOUND [ISOLATION] COMPANY

2900 WESTINGHOUSE BLVD. SUITE 106
CHARLOTTE, NC 28273
704 / 504 / 1127 PH
704 / 504 / 1115 FX
888 / 666 / 5090 TOLL FREE
WWW.SOUNDISOLATIONCOMPANY.COM

www.soundisolationcompany.com

GREEN GLUE

NOISEPROOFING SEALANT

EXCEEDS LEED BUILDING REQUIREMENTS
WILL NOT HARDEN, CRACK OR SEPARATE
NON-FLAMMABLE FORMULATION
VOC COMPLIANT, LOW ODOR



BENEFITS

- ▶ Easy application / soap and water cleanup
- ▶ Non-staining and non-migrating
- ▶ Freeze thaw stable
- ▶ High degree of adhesive and cohesive strength
- ▶ Adheres to wood, concrete, glass, gypsum, metal and plastic
- ▶ More flexible than any other water based sealant



EXCEEDS LEED
GREEN BUILDING
REQUIREMENTS



SOUND [ISOLATION] COMPANY

Soundproofing Made Simple

(888) 666-5090 | Fax: (704) 504-1115
info@soundisolationcompany.com
www.soundisolationcompany.com

Green Glue Noiseproofing Sealant

Green Glue Noiseproofing Sealant is a one-part nonflammable product designed specially for the reduction of sound transmission in all types of wall, floor and ceiling systems. Its primary function is to achieve and maintain the specific Sound Transmission Class (STC) value of the system designed. Use to seal edges and seams of drywall and subfloor to prevent loss of sound isolation caused by leaks.

SPECIFICATIONS

Appearance	Brown Creamy Paste
Tube Size	29 oz.
Solids	67-70% by weight
Viscosity	980,000 cps +/- 10% # spindle 1rpm
PH	7 -7.5
Flammability	Non-Flammable
VOC Content	<5 gr/liter (calculated)
Cure Time	2-7 days
Application temperature	40°F min
Storage	40 to 100 deg F
Clean Up	Soap and Water
Shelf Life	1 year

COVERAGE

28 ounce tube	1/2" bead	22 linear ft.
	3/8" bead	40 linear ft.
	1/4" bead	89 linear ft.

Solve your noise problem. Call now to get it right the first time.

So you need expert design, product selection and installation instruction? We have the experience you need for a partnership that will work.

Installation Guide and Safety Manual

Green Glue Sound Isolation Compound



Green Glue is the highest performance viscoelastic material available to the building and construction markets. It yields unprecedented damping factors and is remarkably tolerant to real-world installation conditions, carrying none of the burden of installation precision of many other damping systems.

SPECIFICATIONS

Active Content.....	.68% +/-5%
Working Time.....	>30 minutes
Cure Time	7 days
Viscosity	Light Paste (65,000 cps)
Odor	Mild (Temporary)
VOC	<2g/liter
Flash Point.....	>200 deg F
Application Temp	40-90 deg F
Damping Factor:.....	Typically .50+ with 2 sheets of 5/8 fire code drywall

COVERAGE

Good: 1 tube per 4 x 8 sheet
Best: 2 tubes per 4 x 8 sheet

ADVANTAGES

- Non toxic (to both you and the environment)
- No mixing required
- Superior performance relative to competitive products
- Faster coverage and lower material cost allow considerably reduced application cost
- Walls/floors/ceilings with superb low frequency attenuation

ACCESSORIES

Acoustical Caulk
Sealtight Putty Pads

Copyright 2007 Sound Isolation Company No part of this document may be reproduced, in whole or in part, without the specific written permission of SIC.

GREEN GLUE IS NOT A STAND-ALONE ADHESIVE- YOU MUST SCREW IN ALL LAYERS OF DRYWALL; DO NOT USE NAILS. DO NOT APPLY GG TO STUDS, JOIST OR METAL CHANNELS, IT WILL NOT WORK.

- Use a standard quart size caulking gun to apply Green Glue.
- Due to its thin consistency (like ketchup) you can easily dispense a tube of Green Glue in 15 seconds.
- Green Glue will not flow off the board during installation.
- Complete coverage is not necessary to obtain excellent results.
- No rolling, troweling or painting; a random pattern of Green Glue provides the best performance.

VENTILATION & CLEAN UP

There is a slight smell when Green Glue is wet. In a similar way that you can smell paint while painting a room, you will also be able to smell the Green Glue while applying. Simply ventilate the room. Keep the empty tubes in a plastic bag and remove them frequently to reduce odor.

Green Glue is easily cleaned up with soap and water. Be sure to clean as you go; it's best not to allow Green Glue to dry before clean up. Use Goof Off® if Green Glue is dry.

STEP 1 - Hanging the First Layer of Drywall

Each layer of drywall should have a 1/4" gap at the perimeter. It is very important that this gap be filled with acoustical caulk.

Use normal drywall screws to attach the board to the studs/joists following your local building codes.

Mudding is required for the first layer to insure best results, one coat is usually sufficient, taping is optional. Seams must be smooth and flat. Acoustical caulk is a substitute for the mudding, and may provide better results.

1/4" gap at perimeter of the surface should be caulked, not mudded or taped. This surface should remain smooth again to avoid bumps.

STEP 2 - Opening the Green Glue Tube

Use a utility knife to cut a 1/8" to 3/8" opening at the end of the tube's plastic tip. Use the metal plunger stick on the caulking gun to break the foil seal, allowing the Green Glue to flow into the plastic tip.

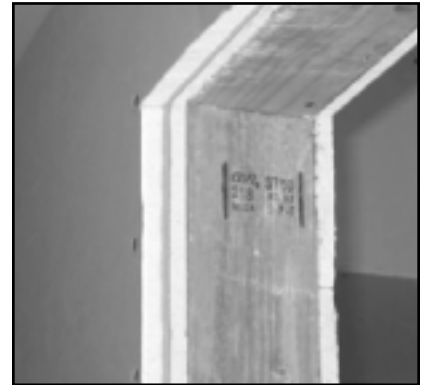


Figure 2.1: Install first layer of drywall



Figure 2.2: Use acoustical caulk along perimeter.



Figure 2.3: Cut a 3/8" opening in tube

STEP 3 - Green Glue Coverage

The ideal coverage is between 2 and 3 tubes of Green Glue per 4' x 8' sheet. Higher performance assemblies require 3 tubes of Green Glue. Please make sure to use the recommended number of tubes per sheet based on your desired results.

Good Performance: 2 tubes per 32 sqft sheet = 192 sqft per case

Great Performance: 3 tubes per 32 sqft sheet = 128 sqft per case

STEP 4 - Applying Green Glue

Place each sheet of drywall on a flat surface; apply Green Glue to the face of second layer, in a random pattern, one sheet at a time. (Fig 3.1)



Leave a 2-3" border with no Green Glue around the edge of the board. This will allow you to carry the board without getting your hands in the Green Glue. (Fig 3.2)

Raise the board into place. Press the board against the wall, ceiling or floor, while making sure to stagger your seams between the two layers. (Fig 3.3)

Screw the board into the studs/joists following local building codes. Make sure to leave a 1/4" gap at the perimeter of the wall/floor or ceiling to be filled with Acoustical Caulk. After the Green Glue is sandwiched between both layers, it will flatten out to .5mm. Allow two weeks for the Green Glue to dry before testing performance. The longer Green Glue is allowed to dry the better it will perform.

Note: Do not allow the Green Glue to dry before installing. Screw the board into place within 15 minutes to guarantee the Green Glue has not had time to start drying.

STEP 5 - Finish Wall

Fill 1/4" perimeter gap with acoustical caulk. Tape and mud drywall seams to typical finish level.

WARRANTY: Because of the many installation variables beyond our control, we shall not be liable for incidental and consequential damages, directly or indirectly sustained, nor for any loss caused by application of these goods not in accordance with current printed instructions or for other than the intended use. Our liability is expressly limited to replacement of defective goods. Any claims shall be deemed waived unless made in writing to us within thirty (30) days from the date it was or reasonably should have been discovered.

RETURNS: We do not accept individual tubes to be returned. Full cases may be returned in the original packaging, at purchasers expense. A 15% restocking fee will apply to all returned items. Returns must be made within 60 days of customer's receipt of original shipment. Returns after 60 days are not allowed.

Disclaimer: These application notes represent the accepted procedures for successful installation of Green Glue. These suggestions may be followed, modified, or rejected by the owner, engineer, contractor, and/or their respective representative(s) since they, not Sound Isolation Company, are responsible for planning and executing procedures appropriate to a specific application. Sound Isolation Company reserves the right to alter these suggestions and encourages contact with the factory or its representatives to review any possible modification to these application notes prior to commencing installation. It is the responsibility of the owner, engineer, contractor, and/or their respective representative(s) to ensure that installation meets all applicable Building Codes. There is no performance warranty expressed or implied for any particular project or installation.



Figure 3.1: Apply Green Glue to the backside of second layer of drywall

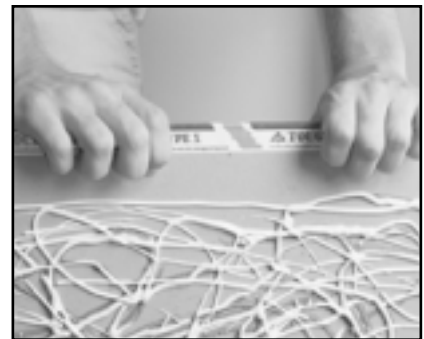


Figure 3.2: Leave a 2-3" border around the edge of drywall



Figure 3.3: Apply second layer of drywall



Figure 3.4: Secure second layer into place

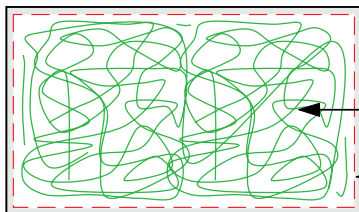
BULK GREEN GLUE PAIL INSTALLATION GUIDE

IT IS RECOMMENDED TO USE OUR RE-LOADABLE GUN AND FOLLOWER PLATE. THIS WILL SAVE TIME, PRODUCT AND MONEY.

OPTION: Use a 3/8" notched trowel, apply in a random pattern. Full coverage is not recommended.

Green Glue will be applied to second layer of drywall, flat on the ground. Green Glue will be installed over first layer of subfloor, before second layer is installed. STAGGER ALL SEAMS.

- 1** Remove gun from box, operate plunger several times to verify it is working correctly. Cut 3/8" opening in tip.
- 2** Remove top from pail, gently set follower plate on open pail with Gasket and hole facing up.
- 3** DO NOT PUT TIP ON GUN; with plunger almost fully depressed gently push open tube onto gasketed opening until sealed.
- 4** Gently push down on plate with gun and pull up on plunger until the tube is full. By using proper pressure you should not see leaks where follower plate meet the pail walls.
- 5** Twist on tip and apply Green Glue in a completely random pattern; for drywall leave a perimeter gap to avoid wetting hands during installation.



- 6** Repeat steps 1-5 until pail is empty, remove follower plate and go to next bucket.

CLEAN UP: Clean up any excess Green Glue with soap and water, immediately clean gun. spray inside tube, and working parts with WD-40, operate plunger and store in a dry clean location.

When sealing partially used pails fo Green Glue it is suggested to use clear poly sheeting over bucket and then apply top to completely seal the pail.



DISCLAIMER: These application notes represent generally accepted procedures for successful installation. Sound Isolation Company reserves the right to alter these suggestions and encourages contact with the factory or its representatives to review any possible modification to these application notes prior to commencing installation.

Installation Guide and Safety Guide

Green Glue Noiseproofing Sealant



Copyright 2007 Sound Isolation Company No part of this document may be reproduced, in whole or in part, without the specific written permission of Sound Isolation Company.

Green Glue Noiseproofing Sealant is a one-part nonflammable product designed specially for the reduction of sound transmission in all types of wall partition systems. Its primary function is to achieve and maintain the specific Sound Transmission Class (STC) value of the system designed. Use to seal edges and seams of drywall and subfloor to prevent loss of sound isolation caused by leaks.

SPECIFICATIONS

Appearance	Brown Creamy Paste
Solids.....	67-70% by weight
Viscosity	980,000 cps +/- 10% # spindle 1rpm
PH.....	7 -7.5
Flammability	Non-Flammable
VOC Content	<5 gr/liter (calculated)
Cure Time	2-7 days
Application temperature	40°F min
Working Temp.....	40 to 90 deg F
Clean Up.....	Soap and Water
Shelf Life	1 year

COVERAGE

29 oz. Tube	1/2" bead	22 linear ft.
	3/8" bead	40 linear ft.
	1/4" bead	89 linear ft.

Soundproofing Made Simple®

2900 WESTINGHOUSE BLVD SUITE 106
CHARLOTTE , NC 28273
704 / 504 / 1127 PH
704 / 504 / 1115 FX
888 / 666 / 5090 TOLL FREE
WWW.SOUNDISOLATIONCOMPANY.COM

INSTALLATION GUIDE

Green Glue Noiseproofing Sealant is required on soundproofing projects to insure the sound ratings. Do not substitute other non-acoustical sealants as they will fail.

STEP 1

- Use a utility knife to cut an opening on the end of the Green Glue Sealant tube.
- Tighten nozzle onto opened Green Glue Sealant tube.
- Cut nozzle to desired bead size (3/8" bead is recommended).

STEP 2

- All surfaces must be clean, dry and free of dirt, dust, oil, moisture and other foreign substances which could interfere with the bond of the Green Glue Acoustical Sealant.

STEP 3

Walls & Ceilings: Use Green Glue Sealant at the perimeter including all intersections with other walls, masonry, steel or other existing materials. 24 hours after application it is acceptable to mud and tape intersections. Green Glue Sealant may be used at all butt joints prior to mud and tape. Green Glue Sealant is paintable after 24 hours.

For multi layer drywall applications it is required to use SilenSeal for both layers.

Penetrations: All penetrations should be sealed completely with Green Glue Sealant, including mechanical and plumbing, outlet and switch plate boxes, lighting and any other cutouts in the surface of wall ceiling or floor.

Floors: For multi layer sub floors maintain a 1/4" gap at the perimeter of second layer. This gap should be filled with Green Glue Sealant. A similar gap should be maintained for any subsequent layers of the finished floor.

NOTES

- Maximum joint sizes should not exceed 5/8" x 1/2"
- Clean tools and excess sealant immediately after application with soap and water.
- Silenseal can be painted after 24 hours if needed.

SOUNDPROOFING ACCESSORIES

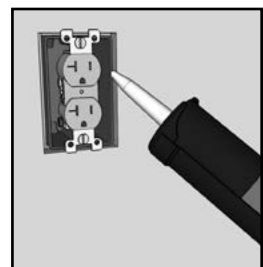
Privacy Duct Silencer	Privacy Recessed Light Covers
Sealtight Putty Pads	Privacy Speaker Covers
Integrity Gasket	Privacy Door Seals



Seal any gap in the rooms corners.



Fill any gap between the wall and subfloor or wall and ceiling with sealant.



Use Green Glue Sealant where the drywall meets the electrical boxes.

DISCLAIMER: These application notes represent generally accepted procedures for successful installation. Sound Isolation Company reserves the right to alter these suggestions and encourages contact with the factory or its representatives to review any possible modification to these application notes prior to commencing installation.



Sealtight Putty Pads (SPP) are used to provide an airtight seal for all electrical boxes, preventing noise travel through the wall or ceiling that you soundproofed. SPP will also maintain the fire rating of the partition. The pads come 7" x 7" to fit a standard two plug outlet, or single switch box. For larger boxes we suggest two pads.

Installation of Sealtight Putty Pads is simple. The pad is molded around the outside of the box, and extended slightly where new drywall will be installed to insure a very tight fit at this intersection. After the drywall is installed you will need to use sealant to fill any gaps as well.

SEALTIGHT PUTTY PADS SPECIFICATIONS



Fill, void or cavity materials classified by Underwriters Laboratories Inc. For use in through-penetration fire-stop systems.



Underwriters Laboratories Inc. Classified Wall protection material. See product Category in UL fire resistance directory.



Classified fill, void or cavity materials For use in through-penetration fire-stop systems. See UL directory of products Certified for Canada and UL fire resistance directory.

STC.....	51
Color.....	Red
Odor	None
Density.....	1.45
Solids.....	100%
Percent Volatile.....	none
Solubility in Water.....	Very slight
Flash Point.....	163 deg. C
Expansion Begins.....	230° F
In-Service Temperature	130° F
Conditions to Avoid	Storage below 55° C
Hazardous Polymerization.....	Will not occur
Incompatibilities	None special

Soundproofing Made Simple®

2900 WESTINGHOUSE BLVD SUITE 106
CHARLOTTE , NC 28273
704 / 504 / 1127 PH
704 / 504 / 1115 FX
888 / 666 / 5090 TOLL FREE
WWW.SOUNDISOLATIONCOMPANY.COM

INSTALLATION GUIDE

Installing Sealtight Putty Pads for Electrical Boxes

NOTES

- Non-hardening for easy installation and retrofitting of cables.
- Two-Stage Intumescence provides aggressive expansion.
- Highly adhesive: stays put!
- Unaffected by humidity, condensation, water.
- Soft, pliable, easy to install.
- Tested and proven acoustical properties.
- No tools required.
- UL Classified (up to 3 hr.)
- FM Approved.

INSTALLATION INSTRUCTIONS

1. Remove any water, excess dust, dirt or oil from the box and adjacent surfaces (Fig 2.1)
2. Remove the protective film from one side of the putty pad. (Fig 2.2)
3. Line pad up evenly with widest part of the box.
4. Fold over onto all surfaces of the electrical box ensuring that the box is covered and any gaps are sealed. (Fig 2.3)
5. Overlap the box edges with the pad to seal at studs, tightly wrap the electrical line and any conduits (Fig 2.4)
6. Extend the pad slightly along the front of the box so that drywall will compress the pad enough to form an airtight seal.
7. If pad size is not sufficient to cover the entire box and all penetrations use additional pad or partials- the performance is dependent on your installation being completed as instructed. (Fig 2.5)
8. Contact your salesperson with any questions about putty pads or any other part of your project- 888-666-5090

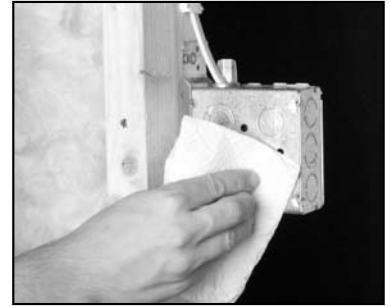


Figure 2.1

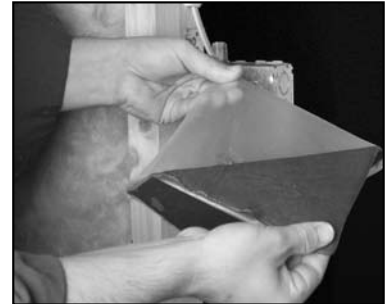


Figure 2.2



Figure 2.3

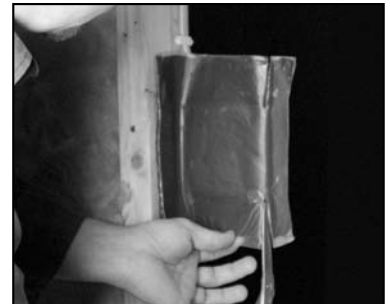


Figure 2.4

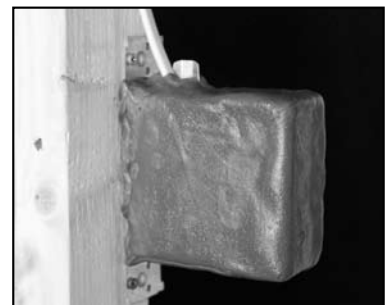


Figure 2.5

CÓMO INSTALAR EL GREEN GLUE

Se puede distribuir fácilmente un tubo de Green Glue en 15 segundos.

El Green Glue no fluirá de la tabla al instalar

Utilice una pistola para calafatear del tamaño uniforme de un cuarto de galón.

No es necesario tener una cobertura específica para obtener resultados excelentes.

No hace falta medir ni allanar.

LIMPIEZA DEL GREEN GLUE: El Green Glue mojado es bastante fácil de limpiar con agua y jabón. Igual que algunas masillas para calafatear y adhesivos, el Green Glue es difícil de limpiar una vez que se haya secado, así que tenga cuidado. Utilice protectores de tela o plástico para cubrir cualquier superficie que no quiera que se ensucie. Limpie el Green Glue antes de secar. Si está intentando de limpiar después que se haya secado, deje que se moje el área con agua y jabón ya que esto ayudará. Como se mantiene pegajoso mientras esté seco, el uso de Avon Skin So Soft® durante la limpieza prevendrá que se le pegue. Se puede aplicar el barro de tabla de yeso sobre el Green Glue mientras que la capa del pegamento sea delgada. También, se puede pintar sobre el Green Glue seco mientras que las capas del pegamento sean delgadas. Si las capas son muy gruesas, la pintura se puede quebrar. Tenga cuidado de que el Green Glue no se ensucie la superficie que va a ser terminada

OLOR GREEN GLUE: El Green Glue es oloroso. De la misma manera que Ud. puede oler pintura mientras pinta un cuarto, también podrá oler el Green Glue mientras se aplica. Mantenga el cuarto bien ventilado para prevenir una obstrucción del olor. Green Glue no tiene olor una vez que se haya secado.

COLGANDO LA PRIMERA TABLA DE YESO: Después de colgar la primera tabla de yeso, se recomienda que Ud. selle las juntas entre las tablas. Esto se puede hacer con masilla para calafatear o barro de tablas de yeso. Tome cuidado de no utilizar una cantidad muy grande de cualquier de los dos productos que esto puede prevenir que la segunda tabla no se siente plano (abajo). Si el tiempo es un asunto, se puede omitir este paso y sellar el perímetro después que la última tabla de yeso se instale.

LA APERTURA DEL TUBO GREEN GLUE: Corte la punta dejando una apertura de 3/8". Use un clavo o una pieza de alambre para romper el sello.

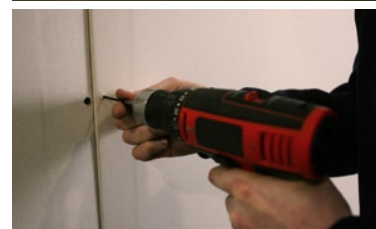
APLICANDO EL GREEN GLUE: Aplique el Green Glue a la espalda de la segunda tabla sobre una superficie limpia y plano. El uso de un banco de trabajo ayudará en prevenir que la tabla se ensucie o que se dañe en el piso. Aplique el Green Glue al azar en granos de 3/8".

DEJANDO UN MARGEN ALREDEDOR DE LA MATERIA:

Deje un margen de 2-3 pulgadas alrededor de la orilla de la materia de la tabla de yeso o construcción. Esto le permitirá llevar la hoja sin llenarse las manos con Green Glue.

COLGANDO LA SEGUNDA TABLA: Después de la aplicación del Green Glue, hay que usar los tornillos normales de la tabla de yeso para enroscarla a los montantes. El Green Glue esparcirá las gotas grandes en una capa delgada (acerca de 0,5 mm). Apriete la tabla de yeso con la materia contra la pared o el techo y enróscala a los montantes. Instale la segunda tabla con Green Glue dentro de 15 minutos para prevenir que se seque. Hay que enroscar las tablas mientras que el Green Glue esté mojado. Asegúrese de seguir las reglas y códigos de la construcción de su área con respeto al tipo de tornillos y los espacios necesarios.

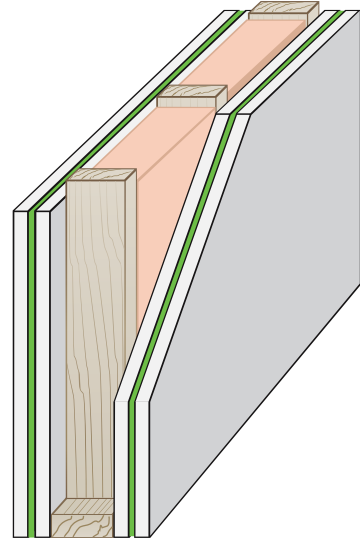
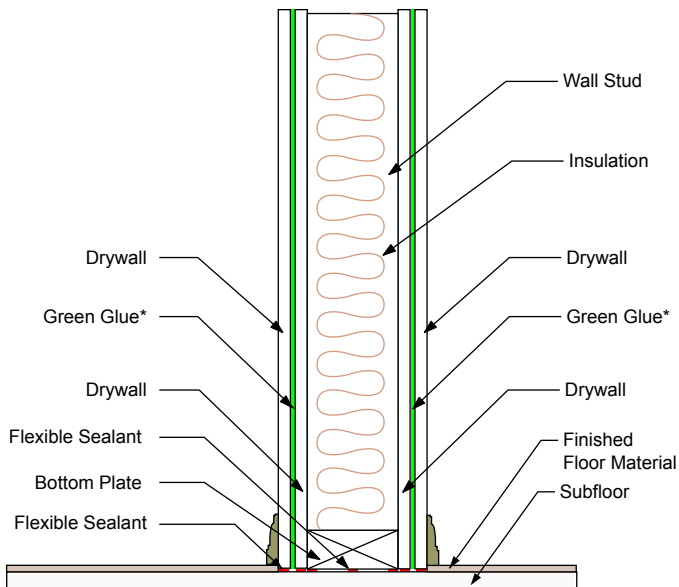
NEGACIÓN: Como hay tantas variables durante la instalación que puedan ser fuera de nuestro control, nosotros no somos responsables ni obligados por daños incidentales o consecuentes, sostenidos directamente o no directamente, ni tampoco por una pérdida causada por la aplicación de estos productos no de acuerdo con las instrucciones actuales o por el uso previsto. Nuestra responsabilidad está limitada al reemplazo de los productos defectuosos. Cualquier reclamo será renunciado a menos que nos escriba dentro de treinta (30) días a partir de la fecha en que el producto defectuoso fue descubierto.



SINGLE STUD WALL CONSTRUCTION DIAGRAMS

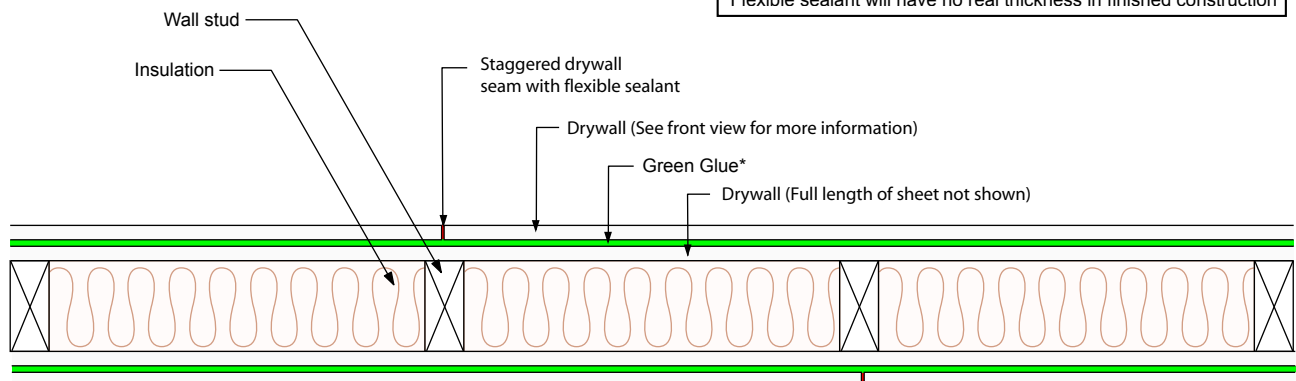
ELEVATION VIEW

Green Glue on each side - Wood Stud Wall



TOP SECTION VIEW

Green Glue on each side - Wood Stud Wall

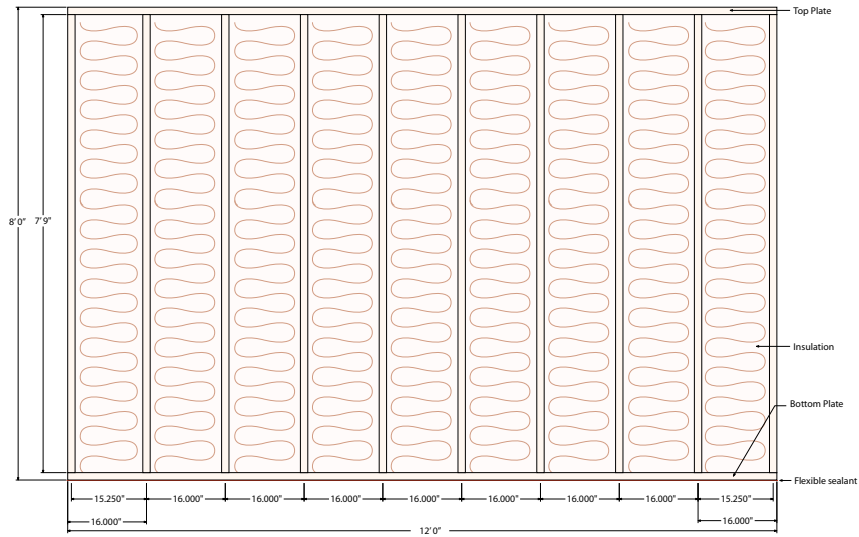


*Actual Green Glue thickness is less than 1/32".

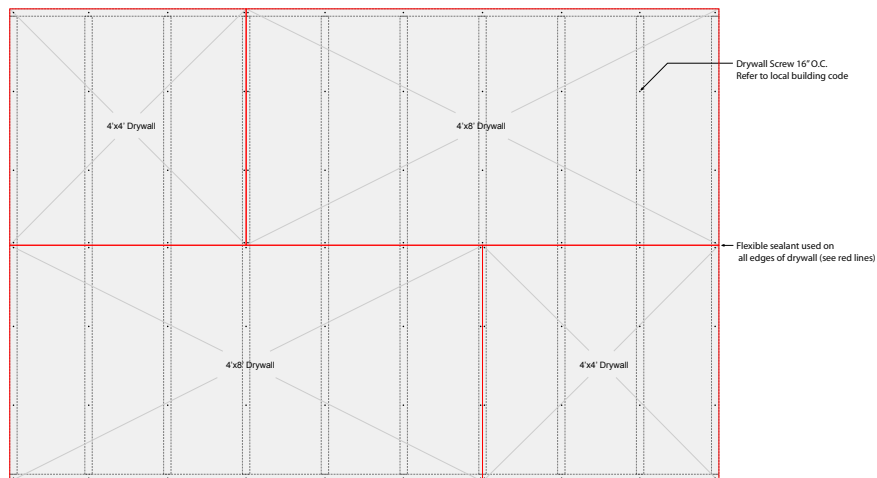
DRYWALL CONSTRUCTION DIAGRAMS

FOR SOUND INSULATION PURPOSES 24" O.C. STUDS ARE PREFERRED

STUD WALL



DRYWALL LAYER 1

DRYWALL LAYER 2
FINISHED WALL